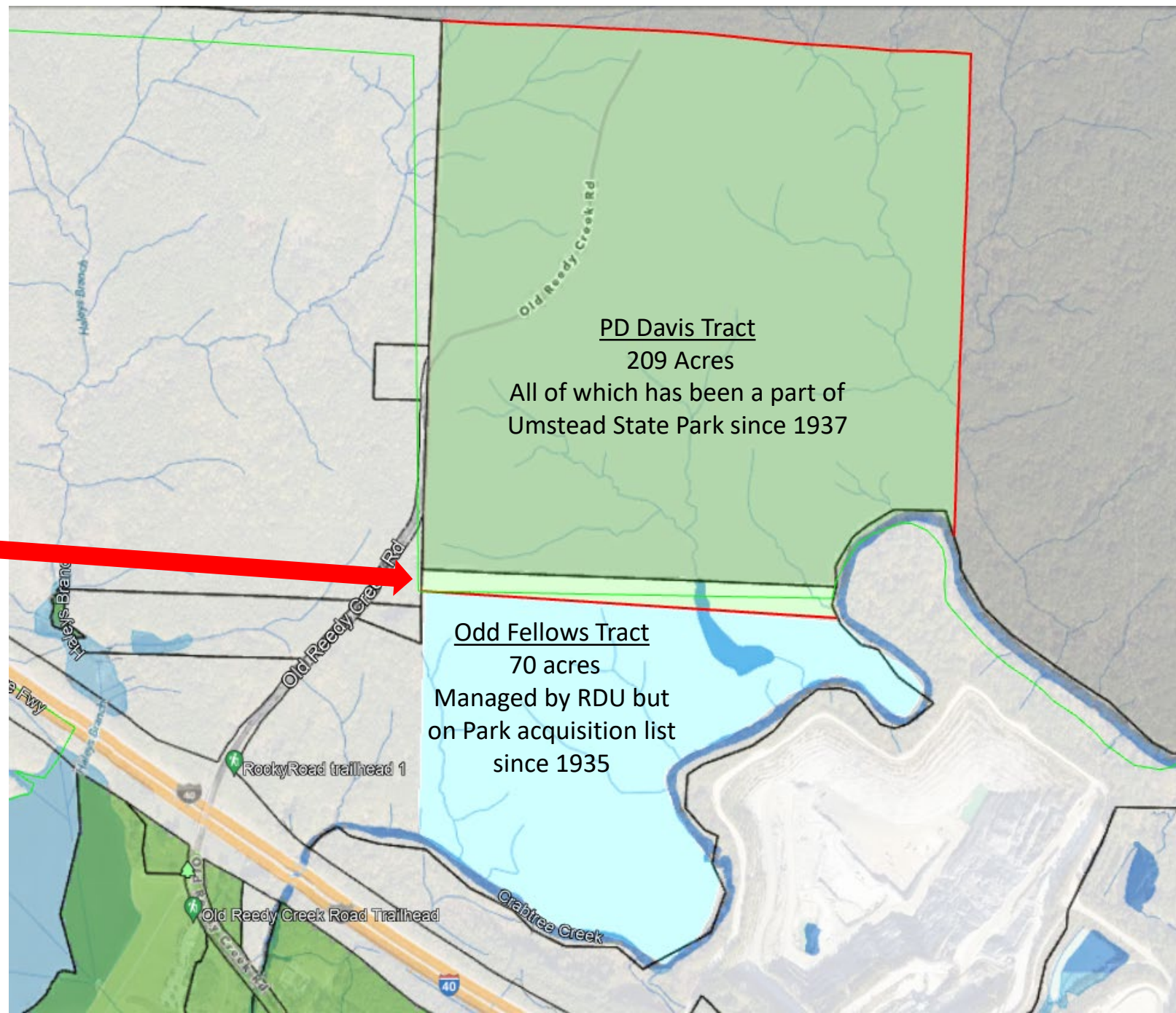
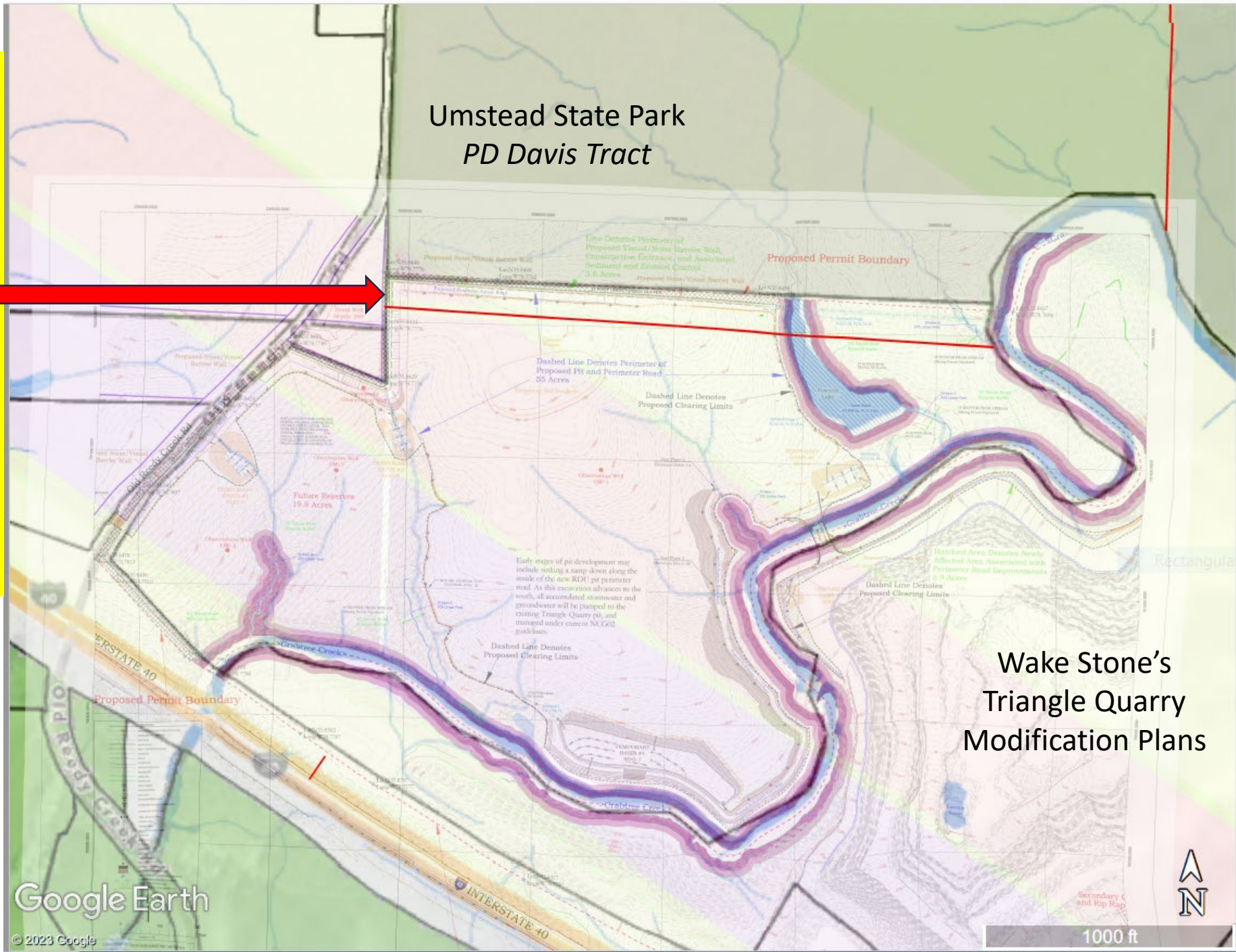
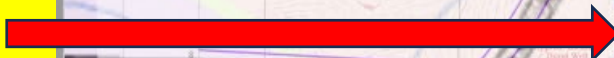


**Border
Encroachment
by
RDU Airport
Into
*Umstead State Park***

(lighter green area)



**Border
Encroachment
by
RDU Airport
Into
Umstead State Park**



Google Earth

© 2023 Google

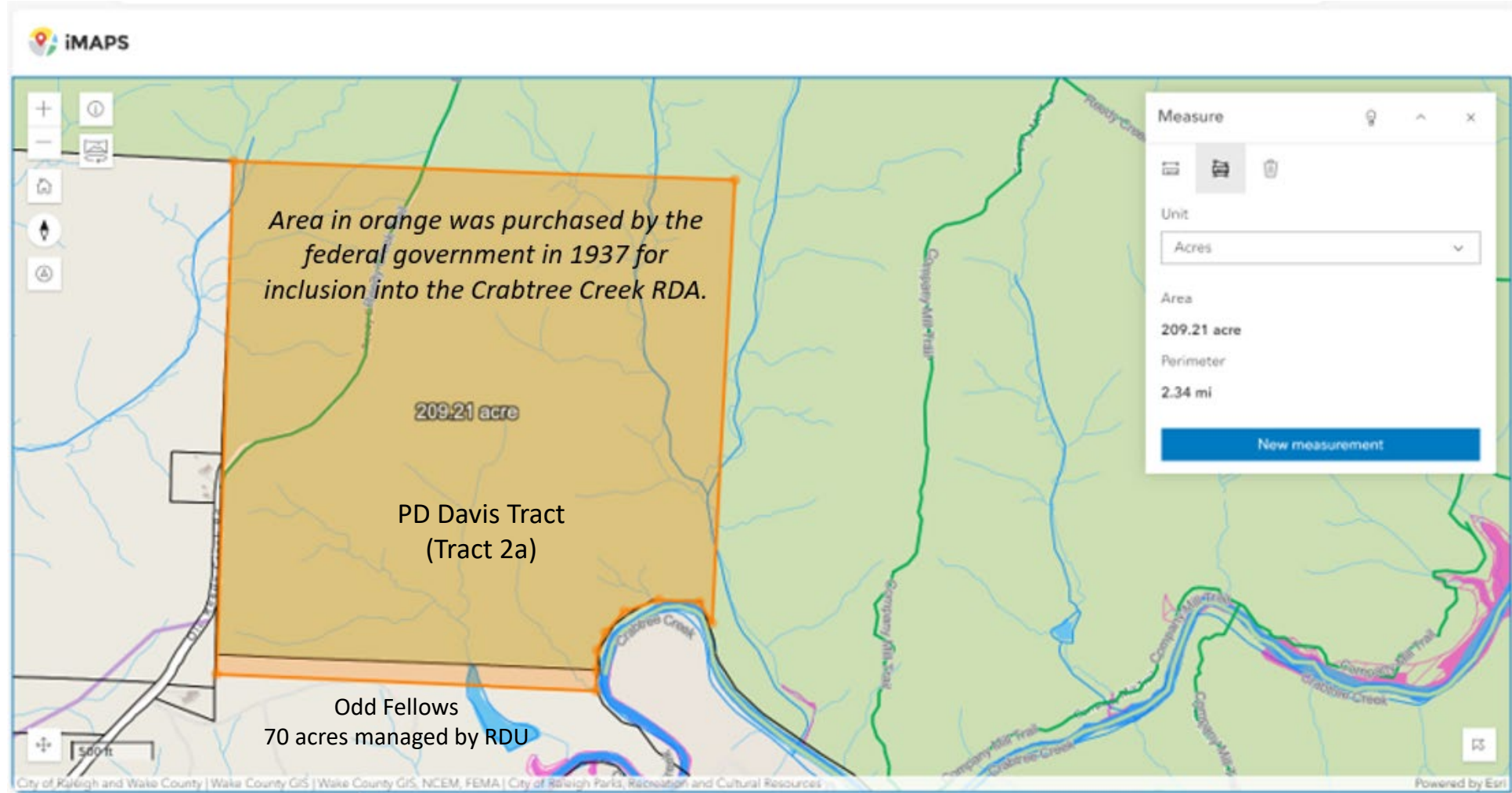
1000 ft

Border Encroachment by RDU Airport into Umstead State Park

For the PD Davis Tract (Tract 2a), the metes and bounds in the 1937 National Park Service (NPS) Purchase Deed produce the area shown below in orange when using the “distance” and “area” features within the “measure” function in Wake County GIS. *This area is 209 acres and agrees with the 1937 NPS purchase deed.*

The true southern border of the PD Davis tract (Tract 2a) extends further south than what is displayed on Wake County GIS and it goes through more of Foxcroft Lake.

Per Wake County GIS, the southern border of the PD Davis tract (Tract 2a) is more northerly than the true boundary. *Using the boundaries displayed in Wake County GIS produces a shortage of 10-15 acres.*



Border Encroachment by RDU Airport into Umstead State Park

Action Needed Promptly:

- The common border between Tract 2a (a part of Umstead State Park) and Tract 21 (long planned Park land, but managed by RDU) needs to be surveyed.
- *The goal of the survey is to locate where in the North-South plane the common border of Tract 2a (PD Davis tract) and Tract 21 (Odd Fellows) falls.*
- The surveyor can easily locate where in the North-South plane this common border falls by measuring 3,121.8 feet from the known point in the NW corner of Tract 2a (the Page-Duke-Davis corner). This will be the SW corner of Tract 2a and noted as Point #1 on the map to the right.
- The surveyor can then confirm the actual common border by connecting Point #1 (described above) with Point #2, which is just South of where the tributary runs into Crabtree Creek as displayed on the 1938 National Park Service (NPS) map.

